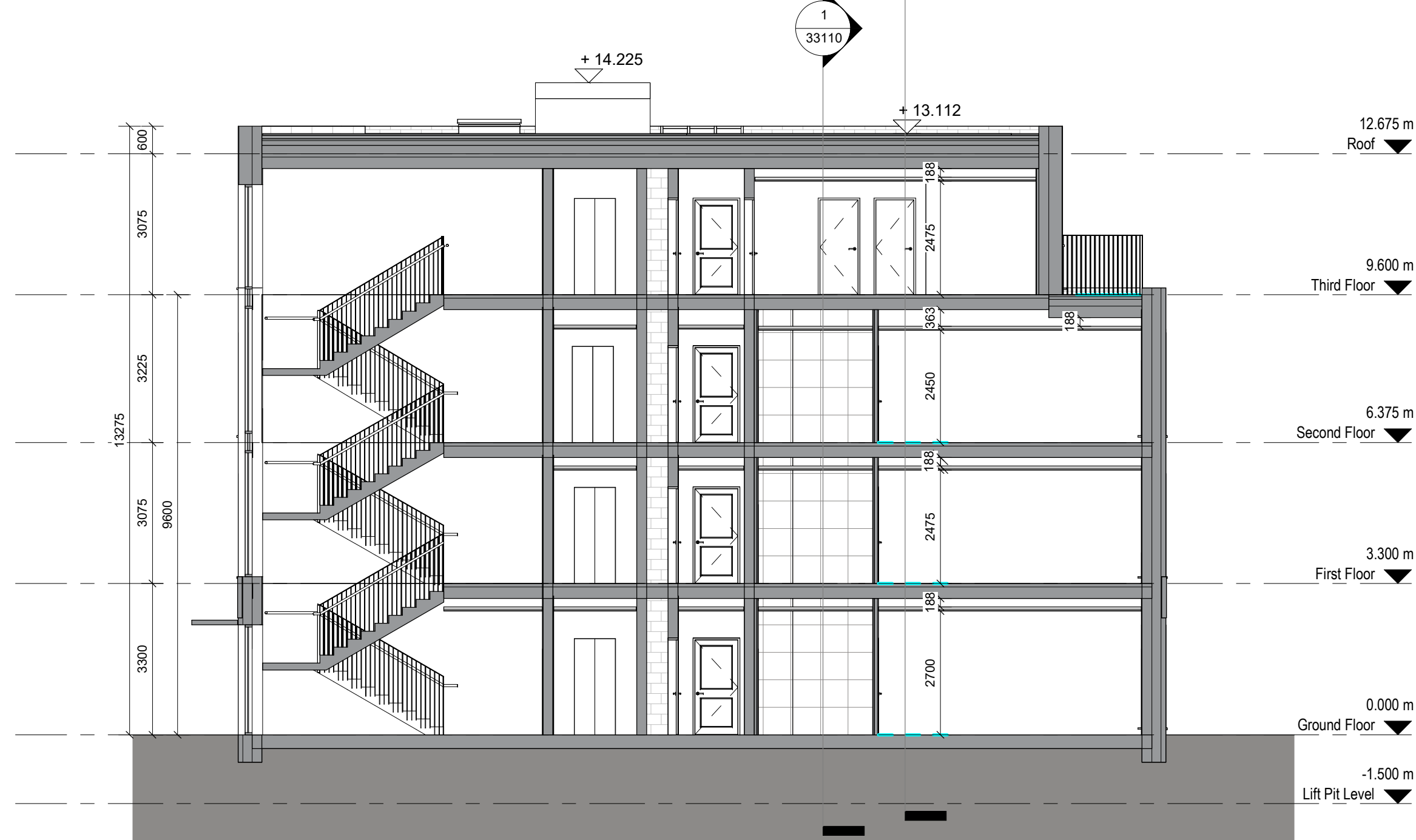




# 1 Apartment Block A Long Section



## 2 Apartment Block A Cross Section

**Notes:**  
DO NOT SCALE FROM THIS DRAWING. USE FIGURED DIMENSIONS IN ALL CASES. VERIFY DIMENSIONS ON SITE AND REPORT ANY DISCREPANCIES TO THE ARCHITECTS IMMEDIATELY. THIS DRAWING TO BE READ IN CONJUNCTION WITH THE ARCHITECTS SPECIFICATION. © THIS DRAWING IS COPYRIGHT AND MAY ONLY BE REPRODUCED WITH THE ARCHITECTS PERMISSION.

Drawing Notes:

NOT FOR CONSTRUCTION

B	Client Name Updated	11/06/25	AG
A	Planning Issue	04/06/25	AG
Rev	Description	Date	Drm

Crawford  
Architecture

The Building Block  
Bridge Street, Sligo  
F91 XYZN  
T: +353 71 930 0090  
E: [john@crawfordarchitecture.ie](mailto:john@crawfordarchitecture.ie)

Project:  
Forrest Road  
Swords,  
Co. Dublin

Client:  
Golden Port Homes Limited

Drawing Title:  
**Apartment Block A Sections**

Job No <b>23039</b>	Date <b>25/04/25</b>	Scale@A1 <b>1 : 100</b>
Status <b>S2 - Suitable for Information</b>		Drawn By: <b>AG</b>
Purpose <b>3.0 Planning</b>		Checked By: <b>JC</b>
Drawing Number <b>23039-CRA-APA-XX-DR-A-33110</b>		Revision <b>B</b>

## 1 Landscape