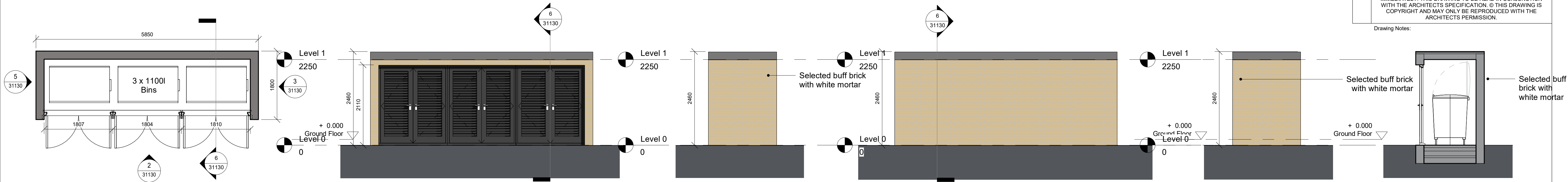


Notes:
DO NOT SCALE FROM THIS DRAWING. USE FIGURED DIMENSIONS IN ALL CASES. VERIFY DIMENSIONS ON SITE AND REPORT ANY DISCREPANCIES TO THE ARCHITECTS IMMEDIATELY. THIS DRAWING TO BE READ IN CONJUNCTION WITH THE ARCHITECTS SPECIFICATION. © THIS DRAWING IS COPYRIGHT AND MAY ONLY BE REPRODUCED WITH THE ARCHITECTS PERMISSION.

Drawing Notes:



1 Duplex Bin Store
1 : 50

APPLIES TO ALL DUPLEXES; LOCATED IN THE COMMUNAL OPEN SPACE, REFER TO PROPOSED SITE LAYOUT 31003

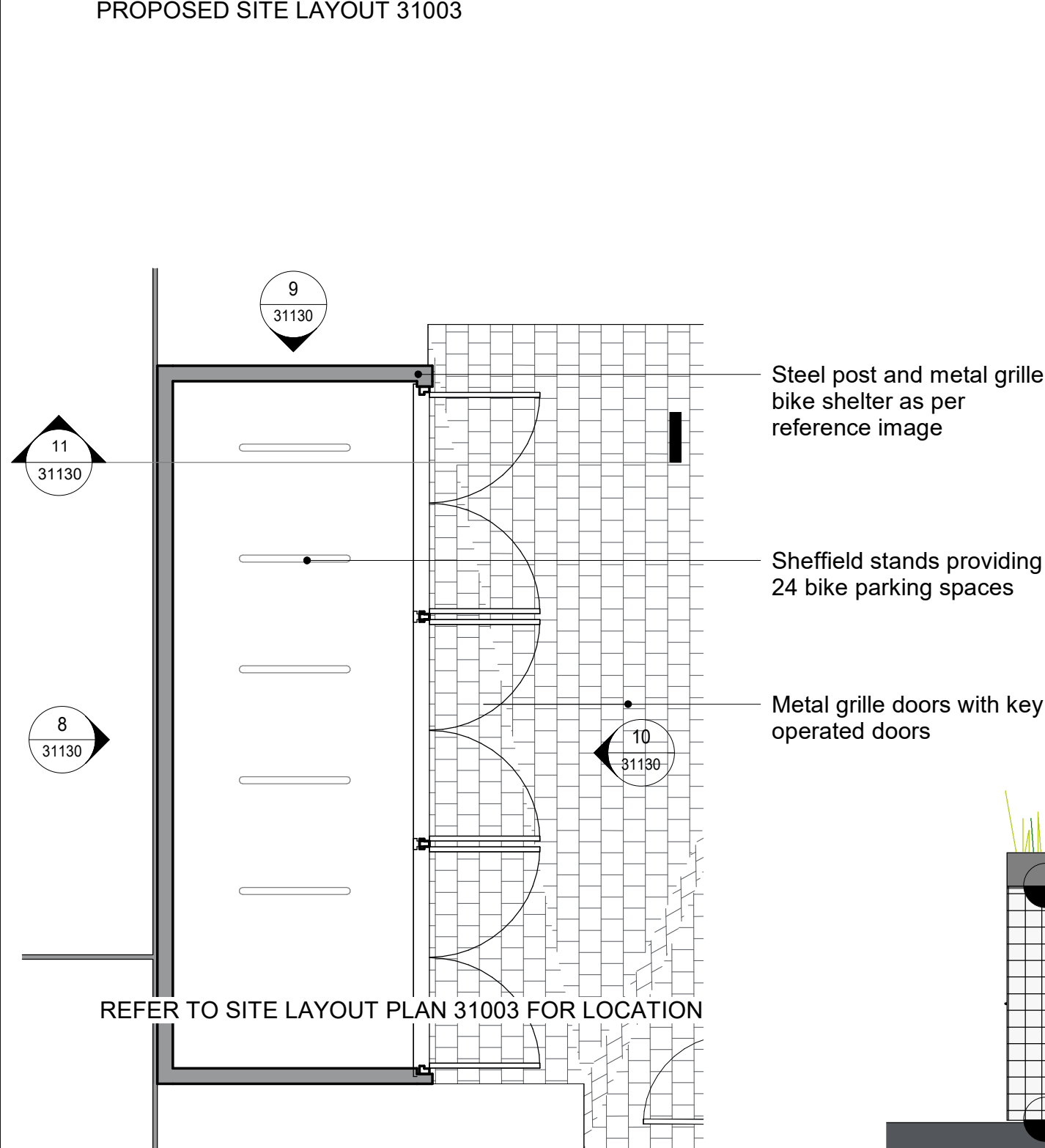
2 Bin Store Front Elevation
1 : 50

3 Bin Store Side Elevation
1 : 50

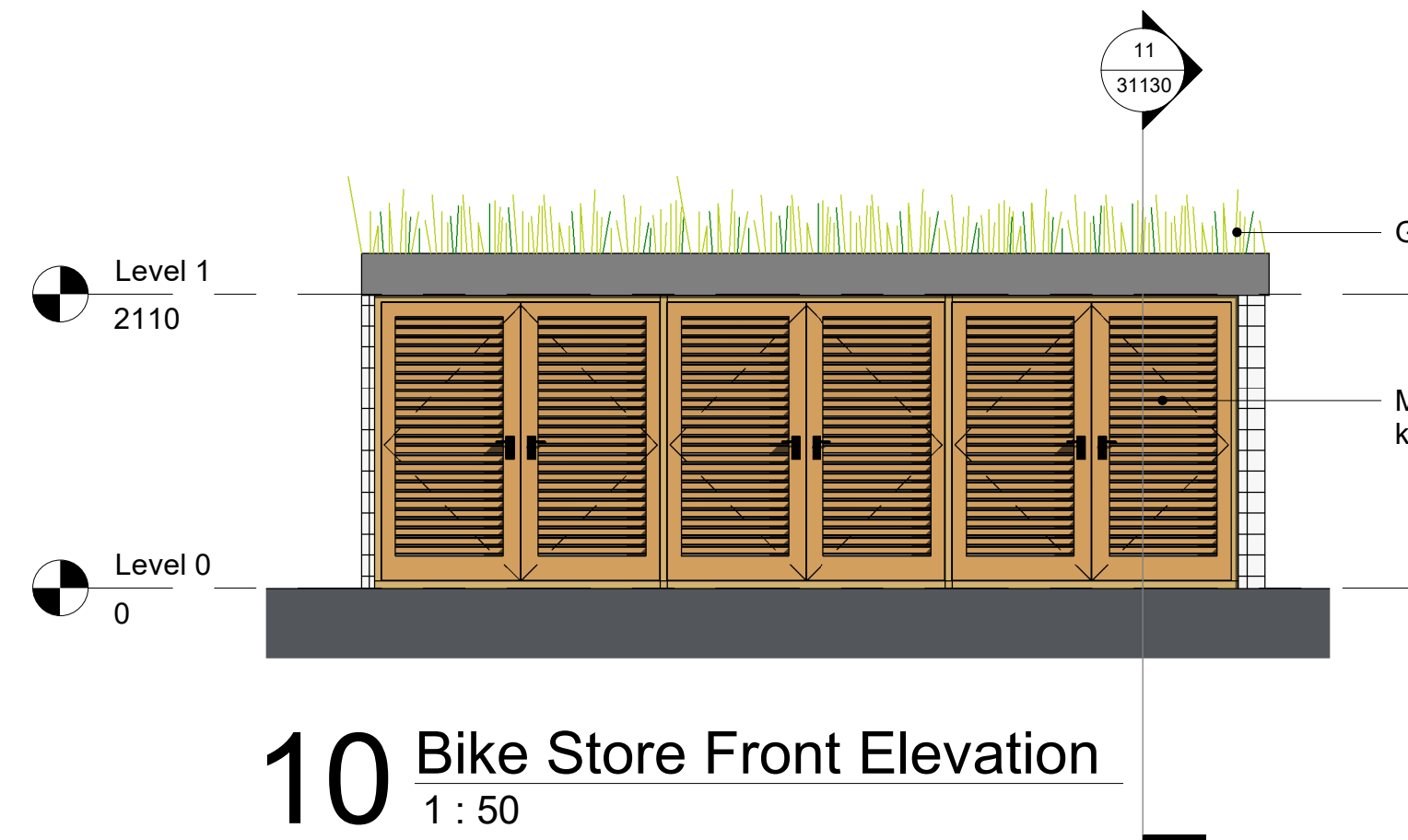
4 Bin Store Rear Elevation
1 : 50

5 Bin Store Side Elevation 2
1 : 50

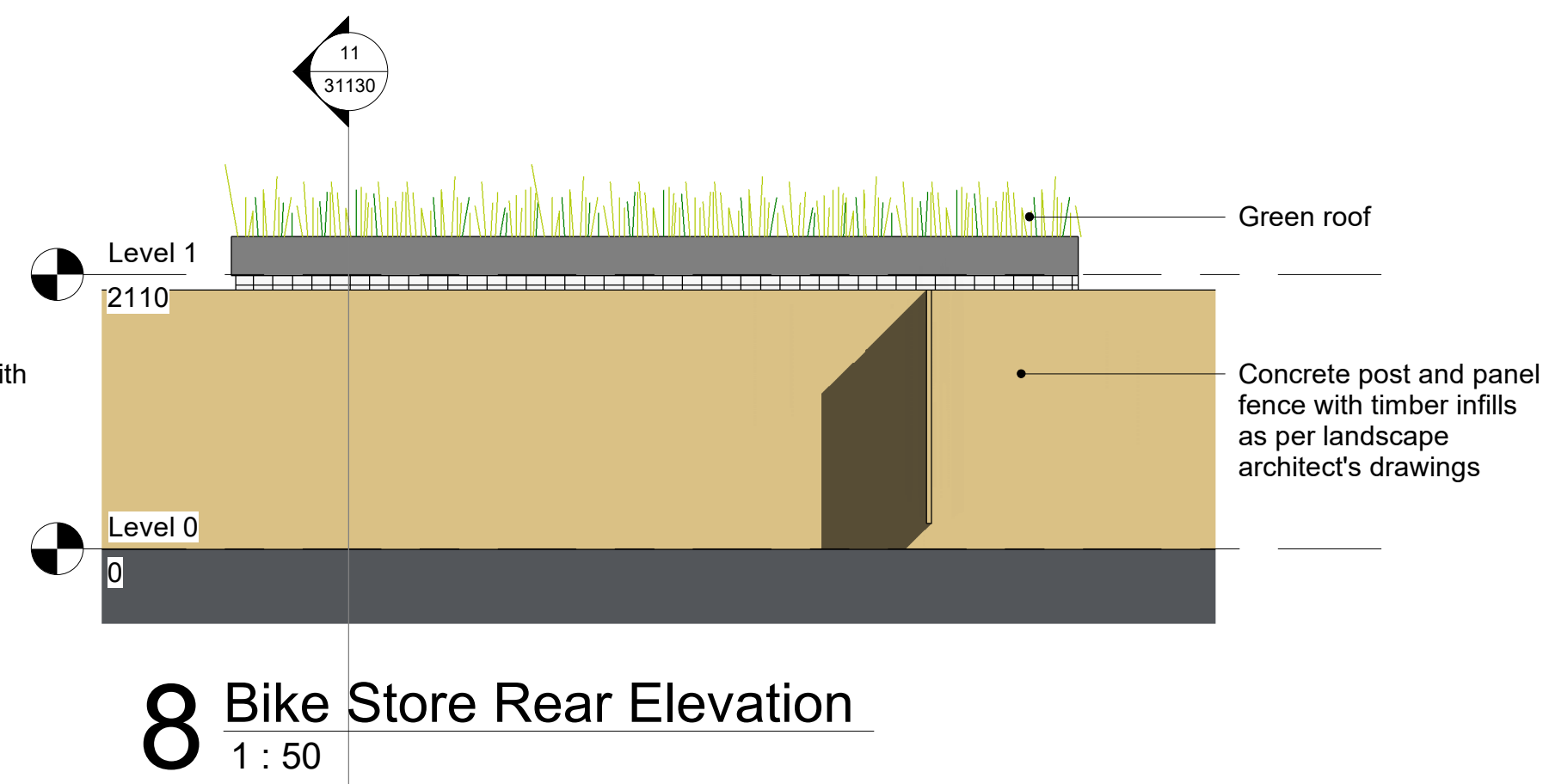
6 Bin Store Section
1 : 50



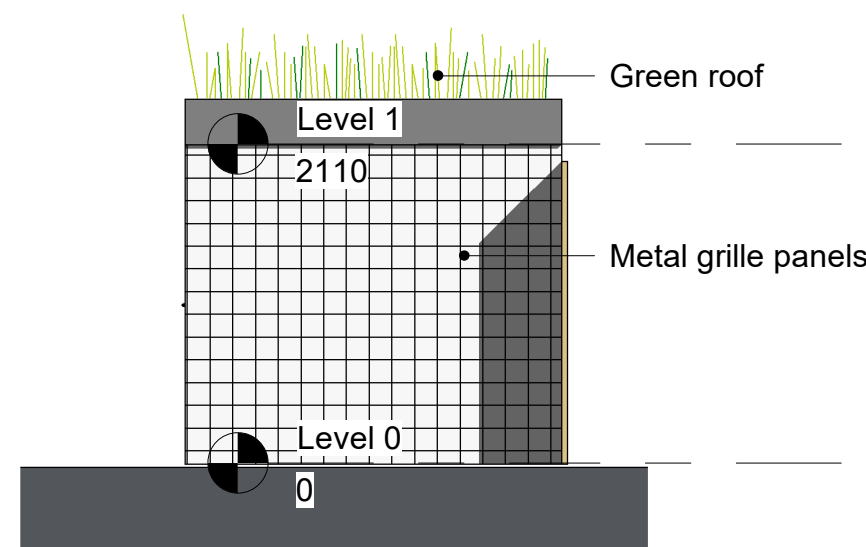
7 Duplex Bike Store
1 : 50



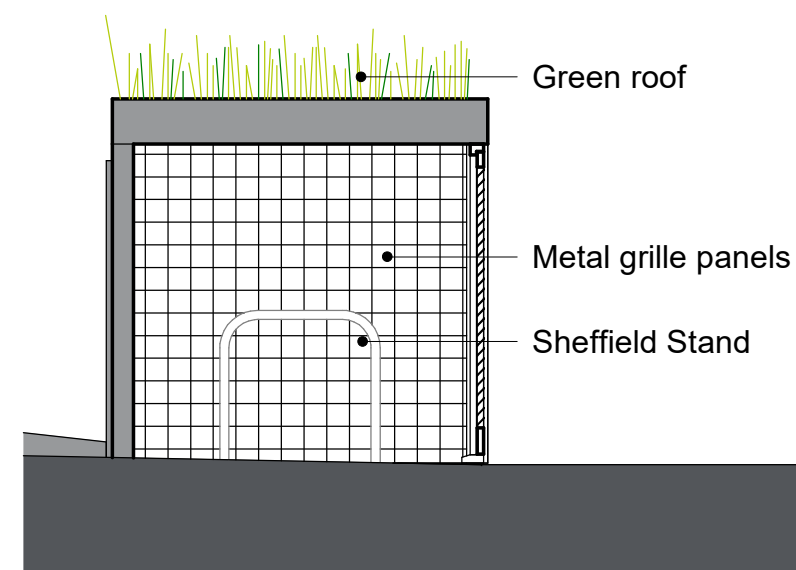
10 Bike Store Front Elevation
1 : 50



8 Bike Store Rear Elevation
1 : 50



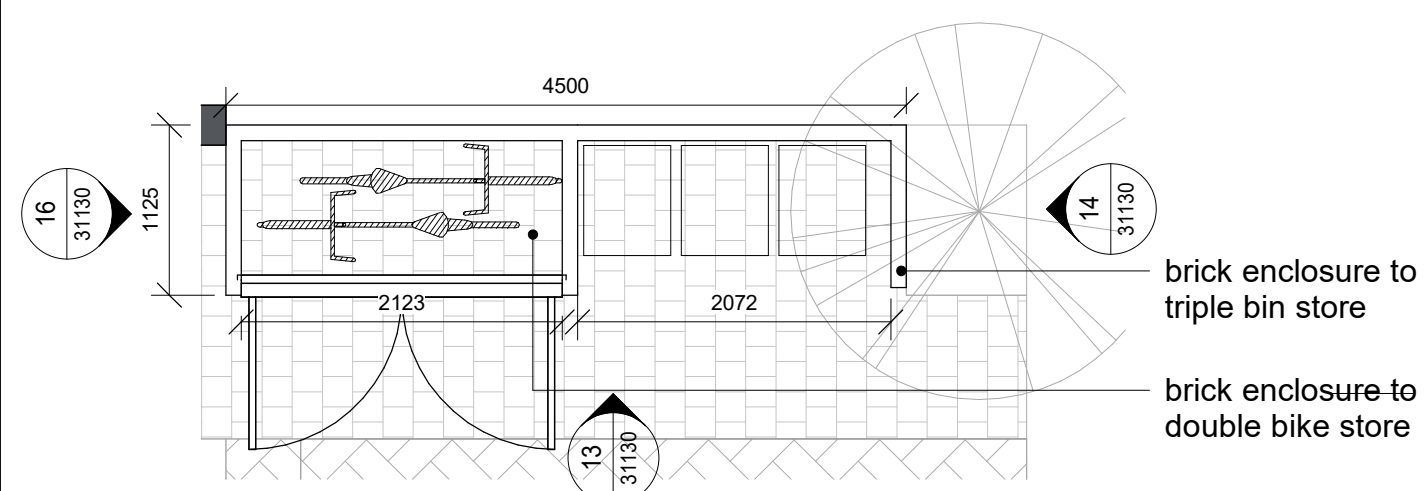
9 Bike Store Side Elevation
1 : 50



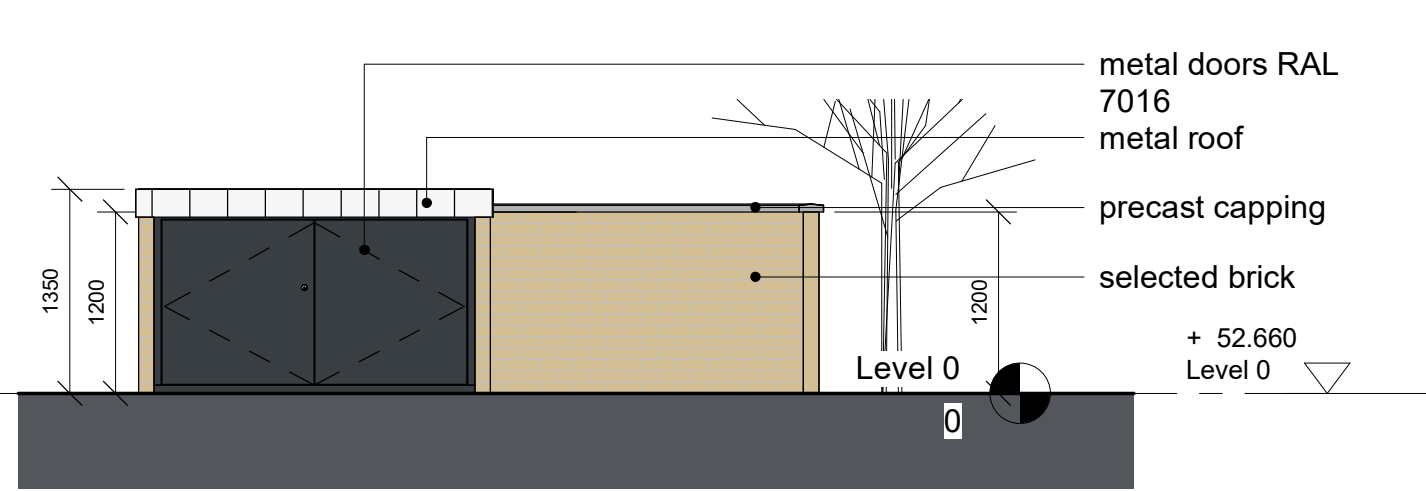
11 Bike Store Section
1 : 50



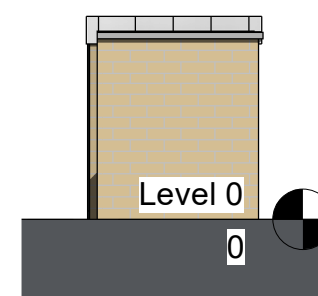
Secure bike shelters from Green Roof Shelters



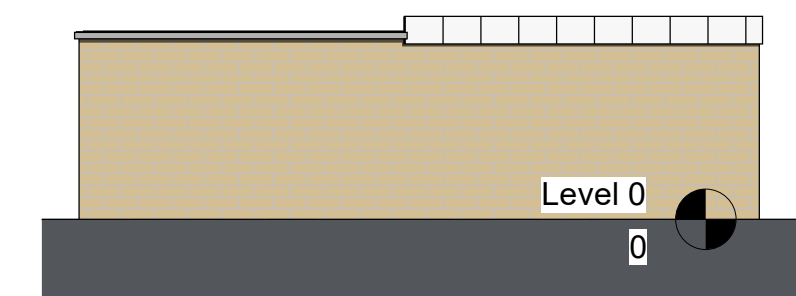
12 House Type Bin/Bike Store
1 : 50



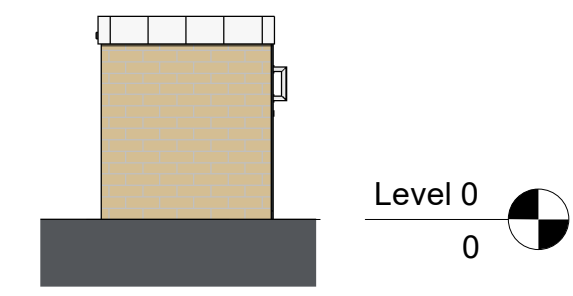
13 House Type Bin/Bike Store Elevation
1 : 50



14 Store Side Elevation 1
1 : 50



15 Bin/Bike Store Rear Elevation
1 : 50



16 Store Side Elevation 2
1 : 50

NOT FOR CONSTRUCTION

Rev	Description	Date	Dm
C	FI Response	01/10/25	AG
B	Client Name Updated	11/06/25	AG
A	Planning Issue	04/06/25	AG

Crawford
Architecture
The Building Block
Bridge Street, Sligo
F91 XYZN
T: +353 71 930 0090
E: john@crawfordarchitecture.ie

Project:
Forrest Road
Swords,
Co. Dublin
Client:
Golden Port Homes Limited

Drawing Title:
Bin and Bike Store Drawings

Job No 23039	Date 07/05/2025	Scale@A1 1 : 50
Status S2 - Suitable for Information	Drawn By: AG	Checked By: JC
Purpose 3.0 Planning	Revision 23039-CRA-XX-XX-DR-A-31130	C

A1 Landscape